



MONTHLY MEMBERSHIP PROGRESS REPORT

District 318 D

Results as of: 5/31/2017

GMT: Mahesh Pasqual

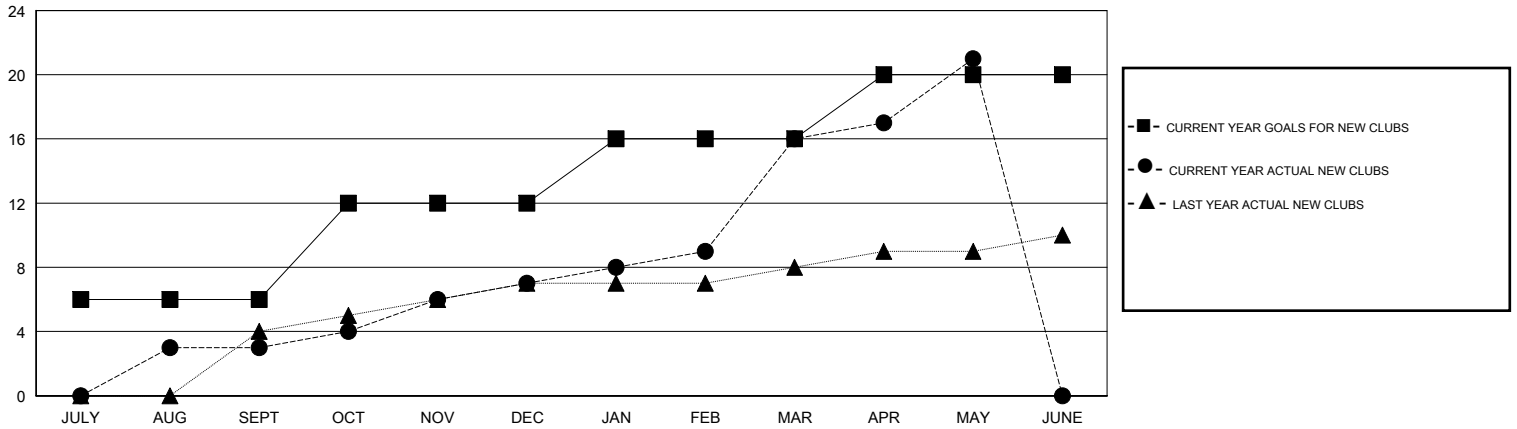
LOCATION INDIA

GMT CA

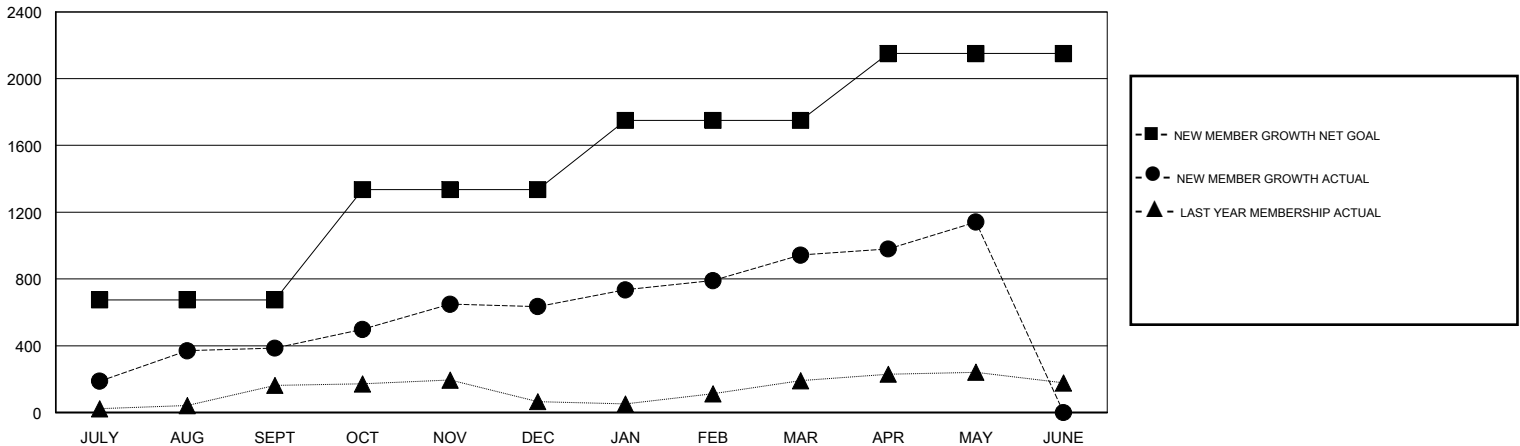
Clubs			
RESULTS FOR 2016-2017			
QUARTER	NEW CLUB GOAL	NEW CLUBS	DROPPED CLUBS
JULY/AUG/SEPT	6	3	0
OCT/NOV/DEC	6	4	1
JAN/FEB/MAR	4	9	1
APR/MAY/JUNE	4	5	0

Members			
RESULTS FOR 2016-2017			
QUARTER	NEW MEMBER GROWTH NET GOAL (not reinstated or transfers)	NEW MEMBER GROWTH ACTUAL (not reinstated or transfers)	DROPPED MEMBERS ACTUAL (including transfers)
JULY/AUG/SEPT	675	472	86
OCT/NOV/DEC	660	349	100
JAN/FEB/MAR	415	411	103
APR/MAY/JUNE	400	296	98

GOALS AND ACTUAL NEW CLUBS CUMULATIVE



GOALS AND ACTUAL MEMBERS CUMULATIVE



DROPPED CLUBS: 2	123 CLUBS OF 139 ADDED 1 OR MORE NEW MEMBERS	GENDER DISTRIBUTION
		MALE 4,327 (84.94%)
		FEMALE 767 (15.06%)
DROPPED MEMBERS	CLICK HERE FOR CUMULATIVE MEMBERSHIP DATA	TOTAL FAMILY UNIT MEMBERS 1,349
DECEASED 8		FAMILY MEMBERS PAYING HALF DUES 700
CLUB CANCELLED 50		
OTHER 329		
TOTAL 387		